

BRAMAH SECURITY EQUIPMENT LIMITED

Marylebone – London – Sales Office and Factory Outlet (LONDON WEST END)

31 Oldbury Place, London, England, W1U 5PT
Telephone +44 (0)844 482 2034 Facsimile +44 (0)20 7935 2779
Email: lock.sales@bramah.co.uk Web: www.bramah.co.uk

Romford – Essex – Factory Shop and Manufacturing Site (LONDON EAST END)

19 Danes Road, Romford, Essex, RM7 0HL
Telephone +44 (0)8080 027262 Facsimile +44 (0)1708 768825
Email: manufacturing@bramah.co.uk Web: www.bramah.co.uk

The Bramah lock mechanism is 227 years old this year.

WORLD PRICE LIST **From – 28th February 2011**

Prices For

Bramah 22mm Profile Cylinder Range

18 – 22

Hours of Business

Marylebone – Sales Office and Trade Counter -Monday to Friday 8.30am to 5.30pm
Saturday 9.00am to 1.00pm

Romford – Factory Shop – Monday to Friday only 8.00am to 4.00pm
Earlier or Saturday by arrangement.

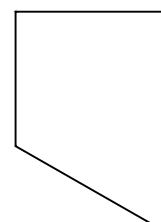
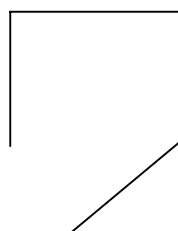
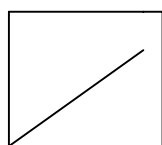
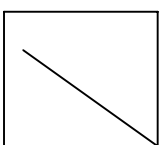
Handing Of Products

Right=1

Left=2

Right=3

Left=4



Bramah Security Equipment Ltd - 31 Oldbury Place, London W1U 5PT

BRAMAH PRODUCT RANGE

Retail Price List Not Including Vat From 28th February 2011 - (Note: all locks are without keys)

PROFILE CYLINDER RANGE - 22mm SWISS STYLE

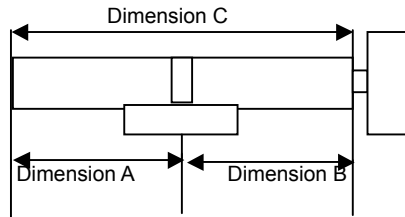
Standard Finishes are Nickel, Brass, BMA. Specials Polished Chrome and Black.

Product Code		<i>RRP £ Without Keys</i>
Profile Cylinders (Swiss 22mm Type)		
CP27	Double sided profile cylinder - 14 <i>slidered</i>	94.98
CP17	Single sided profile cylinder - 7 <i>slidered</i>	69.84
CP17K	Single sided profile cylinder -with turnknob - 7 <i>slidered</i>	94.98

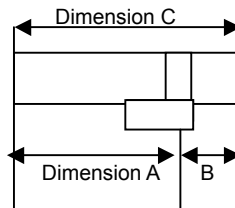
Options	Profile Cylinder Range	
Knobturn Options (included in base product price) - Common shaft, Interchangeable top.		
P014/13	T Knob	25.83
Avon	Round Knob (49mm Dia.) with green arrow to open, marked on.	49.19
Escutcheons (add to base product price)		
P011/40	50mm Diameter.3mm Thick.22mm Profile Escutcheon (SINGLE)	17.33
7541	PK L8130 - 758 Double Escutcheons (Suitable with Adams Rite, Taylor and Imperial Locks) - Bolt Thru - SS/Al.	38.90
5380C/RZ	Escutcheon - 22mm Round Concealed Bolt Fixed Cylinder Roses Price per pair. SS.	12.08
5380C.2MS/RZ	Escutcheon - 22mm Round Concealed Bolt Fixed Cylinder Roses Price per pair. Brass.	26.08

MEASUREMENTS USED WHEN SPECIFYING A BRAMAH 22mm PROFILE CYLINDER

Schematic Diagram of CP27 and CP17K



Schematic Diagram of CP17



Bramah Security Equipment Ltd -31 Oldbury Place London W1U 5PT

CYLINDER SIZE OPTIONS AVAILABLE AS STANDARD WHEN SPECIFYING A BRAMAH 22mm "SWISS STYLE" PROFILE CYLINDER

*When ordering cylinders you will be required to select the Product Type and its Model No.
Please photocopy and fax back to assist with ordering.*

Application Sizes				Product Types	Engineering Sizes			
Total Length - Dim. C	Dim.A	Dim.B	Key Size	CP27,CP17K,C PKK	Cap A	Chassis	Cap B	Total
mm	mm	mm		Model No.	mm	mm	mm	mm
62	31	31	C37	119	20	22	20	62
67	31	36	C50	120	20	22	25	67
72	31	41	C50	121	20	22	30	72
77	31	46	C50	122	20	22	35	77
82	31	51	C63	123	20	22	40	82
87	31	56	C63	124	20	22	45	87
67	36	31	C50	127	25	22	20	67
72	36	36	C50	128	25	22	25	72
77	36	41	C50	129	25	22	30	77
82	36	46	C50	130	25	22	35	82
87	36	51	C63	131	25	22	40	87
92	36	56	C63	132	25	22	45	92
72	41	31	C50	135	30	22	20	72
77	41	36	C50	136	30	22	25	77
82	41	41	C50	137	30	22	30	82
87	41	46	C50	138	30	22	35	87
92	41	51	C63	139	30	22	40	92
97	41	56	C63	140	30	22	45	97
77	46	31	C50	143	35	22	20	77
82	46	36	C50	144	35	22	25	82
87	46	41	C50	145	35	22	30	87
92	46	46	C50	146	35	22	35	92
97	46	51	C50	147	35	22	40	97
102	46	56	C63	148	35	22	45	102
82	51	31	C63	151	40	22	20	82
87	51	36	C63	152	40	22	25	87
92	51	41	C63	153	40	22	30	92
97	51	46	C63	154	40	22	35	97
102	51	51	C63	155	40	22	40	102
107	51	56	C63	156	40	22	45	107
87	56	31	C63	159	45	22	20	87
92	56	36	C63	160	45	22	25	92
97	56	41	C63	161	45	22	30	97
102	56	46	C63	162	45	22	35	102
107	56	51	C63	163	45	22	40	107
112	56	56	C63	164	45	22	45	112

Total Length - Dim. C	Dim.A	Dim.B	Key Size	CP17,CPK	Cap A	Chassis	Cap B	Total
49	31	18	C37	167	20	29	0	49
54	36	18	C50	168	25	29	0	54
59	41	18	C50	169	30	29	0	59
64	46	18	C50	170	35	29	0	64
69	51	18	C63	171	40	29	0	69
74	56	18	C63	172	45	29	0	74

Bramah Security Equipment Ltd - 31 Oldbury Place London W1U 5PT

EQUIPMENT TO WORK WITH BRAMAH 22mm SWISS STYLE PROFILE CYLINDER

Available to mix and match with our own

Retail Price List Not Including VAT From 28th February 2011

Product Code		Bolt mm	Case mm	Back mm	Finish	RRP £
MORTICE LOCK PRODUCTS						
UK STYLE - IMPERIAL - 51mm CENTRES -						
KP7000	Mortice Sashlock - Latchbolt operated by lever handle on both sides. Deadbolt operated by cylinder.	14	63	45	SS/Brass	21.63
KP7000		14	76	57	SS/Brass	21.63
KP7000		14	101	82	SS/Brass	27.66
KP7002	Mortice Rollerbolt Sashlock - Rollerbolt operated by lever handle on both sides. Deadbolt operated by cylinder.	14	63	45	SS/Brass	25.35
KP7002		14	76	57	SS/Brass	25.35
KP7002		14	101	82	SS/Brass	31.38
KP7004	Mortice Deadbolt - Deadlock operated by cylinder.	14	63	45	SS/Brass	19.91
KP7004		14	76	57	SS/Brass	19.91
KP7004		14	101	82	SS/Brass	25.92
KP7006	Mortice Sliding door Lock - Deadbolt operated by cylinder.	14	76	57	SS/Brass	23.69
KP7006		14	101	82	SS/Brass	29.70
KP7007	Mortice Escape Deadlock - Deadbolt operated by cylinder from either side, Emergency or Rapid Exit obtained by depressing lever from inside.	13	76	57	SS/Brass	67.86
KP7007		13	101	82	SS/Brass	73.84
KP7008	Mortice Night Latch - Latchbolt to Spring Only, operated by cylinder outside and lever or knob inside.	76	57	82	SS/Brass	36.38
KP7008		101	82	SS/Brass		41.33
KP7009	Mortice Night Latch - Latchbolt to spring by cylinder outside, lever or knob inside. Bolt can be deadlocked by further turn of key from either side.	76	57	SS/Brass		37.57
KP7009		101	82	SS/Brass		43.56
KP7010	Mortice Night Latch - Latchbolt to spring by cylinder from either side. Bolt withdrawn by lever or knob from inside. For additional security Deadbolt operated by key from either side.	76	57	SS/Brass		38.79
KP7011	Horizontal Mortice Lock - Latchbolt operated by Lever Handle or Knob both sides. Deadbolt operated by cylinder from either side.	14	127	45	SS/Brass	28.17
KP7012	Horizontal Mortice Lock - Latchbolt operated by Lever Handle or Knob both sides. Deadbolt operated by cylinder from either side.	14	151	57	SS/Brass	29.13
KP7018	Horizontal Mortice Night Latch - Latchbolt to spring only, operated by Lever or Knob inside. Deadbolt operated by cylinder from either side.	14	151	57	SS/Brass	60.61
KP7024	High Security Heavy Duty Deadlock - Deadbolt operated by cylinder from either side **HANDED** .	25	76	48	SS/Brass	51.77
KP7034	Heavy Duty Mortice Deadlock - Rollerbolt push and pull action. Deadbolt operated by cylinders both sides. ***UNION REPLACEMENT**	14	76	57	SS/Brass	25.10
KP9762	Roller Bolt Fire Escape Deadlatch - Rollerbolt spring only operated by cylinder both sides or lever either side.	101	57	SS/Brass		79.76
KP9764	Mortice Fire Escape Deadlock - Deadbolt operated by cylinder both sides or lever from either side.	101	57	SS/Brass		76.44
G9066	Standard Frame					13.15
KP9068	Full Frame Kaba Profile					16.75
G9071	Mallet					13.15
G9070	Replacement Glass (or Ceramic)					12.60
G3051	13mm Rebate Set -KP7000,KP7002,KP7007,KP7008,KP7009,KP7010,KP7072					11.76
G3052	19mm Rebate Set					17.96
G3053	25mm Rebate Set					17.96
G3054	13mm Rebate Set -KP7004, KP7006,					11.76
G3055	19mm Rebate Set					17.96
G3056	25mm Rebate Set					17.96
G3057	13mm Rebate Set -KP7011,KP7012,KP7018					11.76
G3058	19mm Rebate Set					17.96
G3059	25mm Rebate Set					17.96
G3064	LH or RH 13mm Rebate Set -KP7024					15.57
G3065	LH or RH 19mm Rebate Set					20.56
G3066	LH or RH 25mm Rebate Set					20.56

Bramah Security Equipment Ltd - 31 Oldbury Place London W1U 5PT

EQUIPMENT TO WORK WITH BRAMAH 22mm SWISS STYLE PROFILE CYLINDER

Available to mix and match with our own

Retail Price List Not Including VAT From 28th February 2011

Product Code		Bolt mm	Case mm	Back mm	Finish	RRP £
FRANK ALLART						
	<i>Long Body</i>					
5355PB49.3	230*40mm Lever Lock Furniture Euro- Profile 49.3mm Centres - Pair - Sprung				Brass	82.22
5355PB50.3/Z 3168	230*40mm Lever Lock Furniture 22mm - Profile 50.3mm Centres - Pair - Sprung				Brass	98.76
	<i>Short Body</i>					
5145PB50.3/Z 3168	152*41mm Lever Lock Furniture 22mm - Profile 50.3mm Centres - Pair - Sprung				Brass	84.25
EUROPEAN STYLE - GLUTZ WITH 72mm CENTRES						
4838.000.13	Mortice Night Latch - Latching Lock complete with anti thrust bolt for passages. From outside opened by key. From inside lever handle retracts bolt.** HANDED LH/RH		93	60	SSS	32.69
4011.000.13	Flat Striking Plate (included with 4838.000.13 as standard)				SSS	
4839.000.13	Mortice Night Latch with Deadlock - Latching Lock complete with deadbolt and anti -thrust bolt for security doors. From Outside - opened by key, from inside lever handle retracts latch bolt and cylinder turn operates deadbolt** HANDED LH/RH**	24	93	60	SSS	36.28
4011.012.13 13mm	Flat Striking Plate (included with 4839.000.13 as standard)				SSS	
25mm	Rebate Kit - Sash Rebate Kit - 13mm for 4000 series				SSS	22.75
5825-5620CK	Rebate Kit - Sash Rebate Kit - 25mm for 4000 series				SSS	27.51
	Fixed Dead Knob - Stainless External Ball Knob 50mm on Rose				SSS	57.50
5465S/5467.2 SSS 250 * 55mm	Fixed Dead Knob on armoured external backplate & internal bolt fixed plate RZ , 74mm centres.				SSS	315.75
5064/5620C	Handle - Stainless Steel Safety pattern Lever handle on Rose - 8mm - Single				SSS	26.13
5057/5620C	Handle - Stainless Steel Safety pattern Lever handle on Rose - 8mm - Single				SSS	26.13
5064	Handle for Fixed Knob & Plate				SSS	27.22
5916	Spindle for use alone -60mm					10.48
5911	Spindle to use with Fixed knob & Plate - 95mm, 110mm,135mm					6.91
5380C/RZ	Escutcheon - 22mm Round Concealed Bolt Fixed Cylinder Roses Price per unit - Price per pair				SS	12.08
5380C.2MS/R Z	Escutcheon - 22mm Round Concealed Bolt Fixed Cylinder Roses Price per unit - Price per pair				PDV Coat	26.08
ADAMS RITE MAXIMUM SECURITY LOCKS FOR USE WITH BRAMAH CP27,CP17,CP17K						
2210-150	Adams Rite Hookbolt Deadlock 25mm backset -inclusive MS2200 Faceplate SAA Finish					32.65
2210-250	Adams Rite Hookbolt Deadlock 30mm backset - inclusive MS2200 Faceplate SAA Finish					32.65
2210-110	Adams Rite Barbolt Deadlock 25mm backset - inclusive MS2200 Faceplate SAA Finish					32.65
2210-210	Adams Rite Barbolt Deadlock 30mm backset -inclusive MS2200 Faceplate SAA Finish					32.65
	MS2200 Faceplate Flat Hook / Bar Lock SAA Finish					5.17
4104	Mounting Bridge (2 Per Set)					6.48
ADAMS RITE MAXIMUM SECURITY LOCKS FOR USE WITH BRAMAH C17SI						
1850-250	Adams Rite Hookbolt Deadlock 24.6mm backset -inclusive MS1850 Faceplate SAA Finish					27.00
1850-350	Adams Rite Hookbolt Deadlock 28.6mm backset - inclusive MS1850 Faceplate SAA Finish					27.00
1850-210	Adams Rite Barbolt Deadlock 24.6mm backset - inclusive MS1850 Faceplate SAA Finish					27.00
1850-310	Adams Rite Barbolt Deadlock 28.6mm backset -inclusive MS1850 Faceplate SAA Finish					27.00
	MS1850 Faceplate Flat Hook / Bar Lock SAA FINISH					5.17
4710-200	Adams Rite Deadlatch 24.6mm backset - inclusive 4700 Faceplate SAA Finish					93.61
4710-300	Adams Rite Deadlatch 28.6mm backset - inclusive 4700 Faceplate SAA Finish					93.61
MCGILL 3R35 ADAPTATION						
3R35 Kaba	Mcgill 3R35X for 22mm Profile - Escape Night Latch					194.74
3R35 Euro	Mcgill 3R35X for Euro Profile - Escape Night Latch					194.74
	Chubb 3R35 Short Handle- Allart 1218					76.97
	Chubb 3R35 Long Handle - Allart 1220					76.97

Bramah Security Equipment Ltd - 31 Oldbury Place London W1U 5PT

EQUIPMENT TO WORK WITH BRAMAH 22mm SWISS STYLE PROFILE CYLINDER

Available to mix and match with our own

Retail Price List Not Including VAT From 28th February 2011

Product Code	Bolt mm	Case mm	Back mm	Finish	RRP £
--------------	------------	------------	------------	--------	-------

MORTICE ELECTRIC RELEASES FOR USE WITH BRAMAH CP27, CP17, CP17K AND MORTICE LOCKCASES

Timber Door Frames

A1	Latch Mortice Release 12V AC 650mA Grey - Fail Locked - For Timber Doors - For Use with Imperial Locks				14.44
7113-340-652	Adams Rite Electric Strike Satin Stainless Steel, Fail Secure. 12vAC1.48A - For Timber Doors - For use with Glutz Mortice Night Latch				164.79
7113-310-652	Adams Rite Electric Strike Satin Stainless Steel, Fail Secure. 12vdc 370mA - For timber Doors - For use with Glutz Mortice Night Latch				164.79

EXIDOR EMERGENCY EXIT HARDWARE

285	Double Door Set to BS EN1125 for Rebated Double Doors			Silver	228.17
294	Single Panic Bolt to BS EN 1125			Silver	122.49
296	Reversible Panic Latch to BS EN 1125			Silver	94.21
302KA	Outside Access Device with Kaba Profile aperture. Can be used with all Exidor pushbar and pad operated devices to provide access from outside while maintaining the emergency exit function from inside. Standard door thickness 45mm. Extra on request			Silver	130.10